



INNERBELYSNING 2020



Hella marine

Vision and Innovation



At sea, power is often a scarce resource. Highly efficient and durable LED lighting has a substantial role to play in conserving energy and enhancing a vessel without sacrificing functionality or compromising safety.

Our vision is to provide world leading products that set benchmarks for quality, reliability, safety and energy efficiency while satisfying customer expectations for outstanding service and support. Hella marine 'Fit and Forget' LED lighting is firmly established as the solution of choice that meets long term reliability and economic considerations for astute owners and operators.

5 YR
WARRANTY

5 Year Warranty

All Hella marine LED based lighting products carry a 5 Year Warranty providing peace of mind that the product will stand the test of time.

For more information visit: hellamarine.com/en/about/warranty



IP67
COMPLETELY
SEALED

IP67 - Completely Sealed

Preventing moisture from corroding internal LED electronics is vital for long term durability in the harsh marine environment. Hella marine products are completely sealed and purpose designed for interior or exterior use, wet or dry.



HIGH
CRI

High CRI

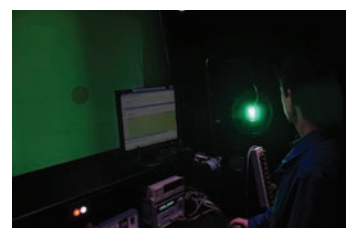
A high colour rendering index ensures object and surface colours are replicated naturally.



UV
RESISTANT

Outstanding UV and Impact Resistance

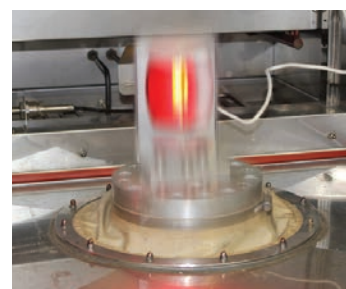
Hella marine lamps utilise advanced impact resistant polymers that will not yellow or deteriorate in the harsh marine environment, even after extreme exposure to UV.



CE

Electromagnetic Compatibility (EMC)

All Hella marine LED products are designed with components that suppress possible interference, both emission as well as susceptibility to emissions, to the limits prescribed in international standards. This prevents possible interference with radio, communication, navigation and other electrical equipment on board.



LED

Class Leading Efficiency

Combining efficient LED sources with advanced optic technology, Hella marine LED products deliver more light output per watt than incandescent based lamps with significant energy savings. Ultra low heat signatures reduce heat on board and prevent damage to surrounding materials.

EuroLED75

Dual Colour Down Lights



Stylish and energy efficient LED down lights for interior and exterior applications with a dual colour function.

Offering the latest in style, functionality, performance, energy efficiency and long-lasting illumination, the EuroLED 75 Dual Colour down lights are a great addition to any vessel.

Leading LED technology delivers exceptional colour rendering, reproducing colours in their natural richness. Producing an impressive output of 190 actual lumens, with a diffused lens, creates a bright, broad and even illumination, replicating the pleasing appearance of a traditional round lamp - giving you the best of both worlds.

Available in warm white/red or white/red, which will beautifully enhance the materials of your vessel, the secondary red LED colour also adds increased functionality by enhancing night time visibility. Screw or spring mount options, pre-wired lamps and sized for a standard cut out make new or refit installation a breeze.

Suitable for both interior and exterior applications, wet or dry, the EuroLED 75 lamps are also completely sealed - IP67 rated. Manufactured using high-grade materials these lamps will not corrode, fade or embrittle in the harsh marine environment.

Have complete peace of mind knowing the EuroLED 75 Dual Colour lamps are tested and proven in the toughest conditions and supported with a leading 5 year warranty.



- 190 lumens of bright light
- High colour rendering for natural appearance
- Smooth diffused lens and broad illumination
- 316 stainless steel or UV resistant plastic trim
- Completely sealed housing (IP67)
- Corrosion resistant for use in salt water applications
- Spring & screw clip mounting for super fast install
- Supported with industry leading 5 year warranty

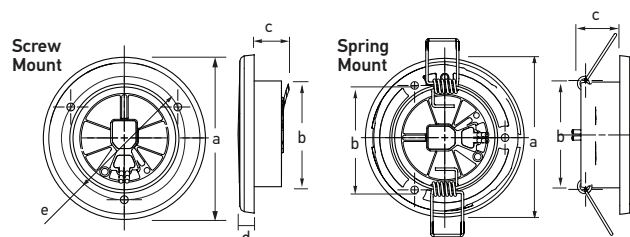
Power Consumption	3W (<0.19A @ 12V DC)
Lumens	190
Beam Angle / CRI	80° / 85 CRI
Operating Voltage	12V DC (9-16VDC)
Protection	IP6K7 & IP6K9K (Completely sealed)
Installation	Screw or Spring Clip options
Rim material	UV resistant plastic or 316 stainless steel options
Approvals	CE, RCM
Manufactured In	New Zealand
Cable	Pre-wired with 120mm tinned marine cable
Colour Temperature	5000K (White) , 2700K (Warm White)
Dimming	Via PWM or Voltage Resistive dimmer

Light Colour	Voltage	Mount Type	Stainless Steel Rim	White Plastic Rim
Red/White	12V	Screw	2JA 015 247-021	2JA 015 247-011
Red/Warm White	12V	Screw	2JA 015 247-121	2JA 015 247-111
Red/White	12V	Spring Clip	2JA 015 247-521	2JA 015 247-511
Red/Warm White	12V	Spring Clip	2JA 015 247-621	2JA 015 247-611

Note: Bulk pack options are also available



This vessel utilises warm white EuroLED 75 lamps throughout with a EuroLED 75 Dual Colour red lamp placed above the cockpit.



Dimensions:

- a = 72.0mm (2.83") with stainless rim
75.0mm (2.95") with plastic rim
- b = 50.0mm (1.96") with screw mounting
54.0mm (2.12") with spring mounting
- c = 16.0mm (0.63") with screw mounting
20.5mm (0.81") with spring mounting
- d = 7.5mm (0.29")
- e = 57.0mm (2.24") PCD

EuroLED95

Gen 2

Down Lights



Style, Functionality and Performance

EuroLED 95 down lights combine the latest in style, functionality and performance. Available in square or round and a range of light LED colours to enhance the interior & exterior of any vessel.

The smooth diffused lens creates a comfortable and uniform appearance, while high output LEDs produce over 420 lumens of broad and even illumination. The ultimate in versatility, with a choice of light temperature between 5000K white – best for enhanced brightness in working conditions to 2700K warm white – creating a cosy atmosphere and bringing out the best in wooden furniture. A high colour rendering index of 85+ also ensures object and surface colours are replicated naturally. Optional red and blue secondary LED colours also add increased functionality. Hella marine lamps are completely sealed so they can be used for interior and exterior/wet or dry locations.

The EuroLED series are compatible with digital switching systems such as Empirbus and CZone. The lights can be dimmed down to 10%, and make no noise at high PWM levels.



- 420 lumens of bright light
- High colour rendering for natural appearance
- Smooth diffused lens and broad illumination
- Highly polished 316 stainless steel trims in square or round
- Completely sealed housing (IP67)
- Corrosion resistant for use in salt water applications
- Multivolt electronics for use on 12V and 24V vessels
- Spring clip mounting for super fast install
- Supported with industry leading 5 year warranty

Power Consumption	6W
Lumens	420
Beam Angle / CRI	90° / 85 CRI
Operating Voltage	Multivolt 12/24V DC
Protection	IP6K9K (Completely sealed)
Rim Material	Highly Polished 316 Stainless Steel
Approvals	CE, RCM
Manufactured In	New Zealand
Cable	Pre-wired with 150mm tinned marine cable
Colour Temperature	5000K (White) , 2700K (Warm White)
Dimming	Via PWM

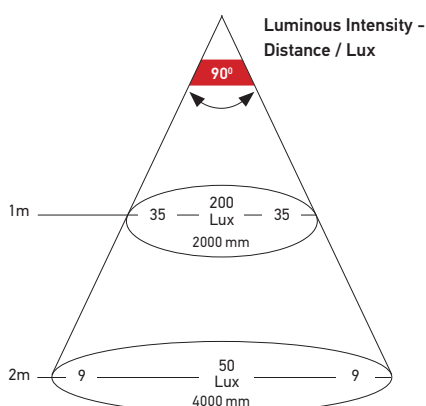
Light Colour	Square polished stainless steel rim	Round polished stainless steel rim
White (Spring Clip)	2JA 958 340-511	2JA 958 340-011
White/Red (Spring Clip)	2JA 958 340-601	2JA 958 340-101
White/Blue (Spring Clip)	2JA 958 340-611	2JA 958 340-111
Warm White (Spring Clip)	2JA 958 340-521	2JA 958 340-021
Warm White/Red (Spring Clip)	2JA 958 340-621	2JA 958 340-121
Warm White/Blue (Spring Clip)	2JA 958 340-631	2JA 958 340-131

Note: Bulk pack options are also available

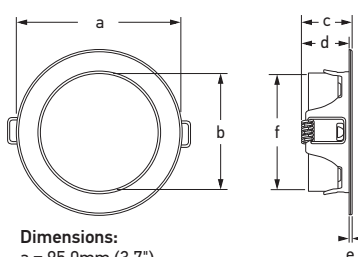


Stainless Steel Rim

Single and dual colour options

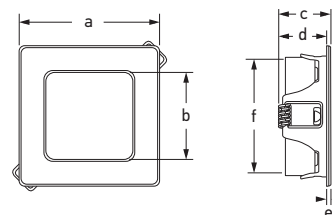


Round Spring Clip



Dimensions:
a = 95.0mm (3.7")
b = 68.0mm (2.7")
c = 30.0mm (1.2")
d = 27.3mm (1.07")
e = 2.0mm (0.08")
f = 72.0mm (2.83") (Mounting Hole)

Square Spring Clip



Dimensions:
a = 78.0mm (3.1")
b = 48.0mm (1.9")
c = 29.0mm (1.14")
d = 26.4mm (1.04")
e = 2.5mm (0.1")
f = 72.0mm (2.83") (Mounting Hole)

Interior & Exterior Lighting

EuroLED

- Ultra low power consumption
- High colour rendering (CRI 85)
- Completely sealed IP67
- UV, corrosion and impact resistant
- 316 stainless steel rims
- Made in New Zealand
- 5 year warranty

EuroLED 95 down lights combine the latest in style, functionality and performance. The smooth diffused lens creates a comfortable and uniform appearance, while high output LEDs produce a broad and even illumination.

Each EuroLED lamp is completely sealed, highly impact and shock resistant for an ultra long service life. EuroLED lamps can be installed almost anywhere on board, interior or exterior, wet or dry. The low heat signature will not cause damage to surrounding materials.

Multivolt electronics provide consistent illumination and protection across a range of voltages, even under severe voltage fluctuations, low battery voltages and long cable runs. Each EuroLED lamp can be dimmed and controlled via the Hella marine Dimmer (5XA 998 572-001).

Glare diffusion without light loss is key with any LED lamp to maintain efficiency and safety. Significant eye strain can result from periods of looking directly into a powerful LED point source. Hella marine lens technology provides a safe and uniform light pattern, without glare or discomfort.

EuroLED 75s in Dickey Semifly 36 Saloon



EuroLED 75

Light Colour / Voltage	Mounting	White Plastic Rim	Stainless Steel Rim
White (12V)	Screw Mount	2JA 958 110-011	2JA 958 110-021
White (24V)	Screw Mount	2JA 958 110-111	2JA 958 110-121
Warm White (12V)	Screw Mount	2JA 958 109-011	2JA 958 109-021
Warm White (24V)	Screw Mount	2JA 958 109-111	2JA 958 109-121
White (12V)	Spring Clip	2JA 958 110-511	2JA 958 110-521
White (24V)	Spring Clip	2JA 958 110-611	2JA 958 110-621
Warm White (12V)	Spring Clip	2JA 958 109-511	2JA 958 109-511
Warm White (24V)	Spring Clip	2JA 958 109-611	2JA 958 109-621

Power Consumption	3W
Lux @ 1m	100 (white)
Beam Angle	80°
Dimensions (W,D)	75 x 24mm (Plastic Rim)



EuroLED 75 Dual Colour

Light Colour / Voltage	Mount Type	Stainless Steel Rim	White Plastic Rim
Red/White (12V)	Screw	2JA 015 247-021	2JA 015 247-011
Red/Warm White (12V)	Screw	2JA 015 247-121	2JA 015 247-111
Red/White (12V)	Spring clip	2JA 015 247-521	2JA 015 247-511
Red/Warm White (12V)	Spring clip	2JA 015 247-621	2JA 015 247-611

For more information see page 4.



EuroLED 95 GEN 2

Spring Mount with Highly Polished 316 Stainless Steel Rim

Light Colour	Square Rim	Round Rim
White	2JA 958 340-511	2JA 958 340-011
White/Red	2JA 958 340-601	2JA 958 340-101
White/Blue	2JA 958 340-611	2JA 958 340-111
Warm White	2JA 958 340-521	2JA 958 340-021
Warm White/Red	2JA 958 340-621	2JA 958 340-121
Warm White/Blue	2JA 958 340-631	2JA 958 340-131

Power Consumption	6W (White)
Voltage Range	Multivolt 12/24V DC
Lux @ 1m	200 (White)
Beam Angle	90°
Dimensions (W,D)	78 x 29mm (Square Rim) 95 x 30mm (Round Rim)

For more information see page 5.



Interior & Exterior Lighting

EuroLED

- Dual colour options
- Touch control switching
- Completely sealed IP67
- Ultra low power consumption
- UV, corrosion and impact resistant
- Made in New Zealand
- 5 year warranty

EuroLED 130 & 150 lamps incorporate the latest completely sealed touch sensitive technology.

Lighting control is beautifully simple. Touch the colour pad for red or blue light, the white pad for white light. On the dual colour versions, hold your finger on the pad for more than two seconds and the lamp will cycle through four dimming levels. Release your finger on the light level required.

Dual colour EuroLED Touch lamps can also be remotely operated from multiple points with 'off the shelf' ON/OFF/ON momentary switches. Holding one of the external switches for two seconds will synchronise the lamps to the same dimming level. Light levels are 'remembered' by the lamps circuitry. The lamp will always turn on at the colour intensity previously set, regardless of power interruption.

Single colour White or Warm White EuroLED Touch lamps (without dimming or momentary switch control) are equally as easy to use. Touch the white pad for ON, touch the black pad for OFF.



EuroLED 115

Screw Mount

Light Colour	White plastic rim	Polished stainless steel rim
White	2JA 980 820-001	2JA 980 820-011
Warm White	2JA 980 820-101	2JA 980 820-111

Surface Mount with Switch

Light Colour	White plastic rim	Polished stainless steel rim
White	2JA 980 828-001	2JA 980 828-011
Warm White	2JA 980 828-101	2JA 980 828-111

Power Consumption	4.5W
Lux @ 1m	410 (White)
Beam Angle	28°
Dimensions (W,D)	115 x 32mm (Plastic Rim)



EuroLED 130

Light Colour	White Shroud	Black Shroud
White / Red	2JA 959 950-121	2JA 959 950-111
White / Blue	2JA 959 951-121	2JA 959 951-111
White (Touch)	2JA 959 950-521	2JA 959 950-511
White (Non-Touch)	2JA 959 820-521	2JA 959 820-511

Power Consumption	4W
Lux @ 1m	610
Beam Angle	30°
Dimensions (W,D)	130 x 30mm



EuroLED 150

Touch Lamp

Light Colour	White Shroud	Stainless Steel Shroud
White / Red	2JA 980 630-001	2JA 980 630-011
Warm White / Red	2JA 980 630-101	2JA 980 630-111
White / Blue	2JA 980 630-201	2JA 980 630-211
White	2JA 980 630-501	2JA 980 630-511
Warm White	2JA 980 630-601	2JA 980 630-611

Non-Touch Lamp

Light Colour	White Shroud	Stainless Steel Shroud
White	2JA 980 631-501	2JA 980 631-511
Warm White	2JA 980 631-601	2JA 980 631-611

Power Consumption	4W
Lux @ 1m	370 (White)
Beam Angle	40°
Dimensions (W,D)	150 x 20mm



Utility Lighting

DuraLed

Powerful white light for heavy duty applications and a safe, energy efficient and reliable alternative to incandescent and fluorescent lighting.

- Completely sealed IP67
- UV, corrosion and impact resistant
- Ultra low power consumption
- Multivolt 12/24V DC
- Pre-wired with marine cable
- 5 year warranty

DuraLED lamps feature precision machined optics to purposely disperse light in a very wide spread pattern without glare or harsh point sources.

The result is LED technology ideal for engine room illumination, under decks, heavy duty applications where reliability must not be compromised, and to throw light into confined spaces and cavities on a wide range of vessels.

Product reliability is second to none, proven worldwide in thousands of highly demanding applications. Each lamp is a completely sealed design, highly impact resistant and shock resistant, ensuring an ultra long service life.

DuraLED lamps are surface mounted and feature a unique installation system where the fastening load is taken up by a heavy duty nylon bush to eliminate possible stress on the lamp housing.

Hella marine Multivolt circuitry provides constant illumination and circuit protection from 12-24V DC, even under severe voltage fluctuations.

DuraLED 50LP lamps are high tech, low profile lamps which are available in two light patterns, Spread and Wide Spread, to suit a variety of applications.

DuraLED 50LP lamps also carry ISO Ignition Protection approval for safe and certified installation when lamps are located near flammable gas sources.



DuraLED 12

Light Colour	Switch	Non Switch
White	2JA 980 704-001	2JA 959 700-101
Warm White	2JA 980 704-501	2JA 959 700-701

Power Consumption	2.5W
Lux @ 1m	60
Beam Angle	120°
Dimensions (H,W,D)	65 x 140 x 32mm



DuraLED 20

Light Colour	Spread lens
White	2JA 980 608-001

Power Consumption	4W
Lux @ 1m	350
Beam Angle	60°
Dimensions (H,W,D)	100 x 177 x 30mm



DuraLED 36

Light Colour	Spread lens
White	2JA 959 037-521

Power Consumption	7W
Lux @ 1m	450
Beam Angle	62°
Dimensions (H,W,D)	100 x 177 x 30mm



DuraLED 50 Low Profile (LP)

Light Colour	Spread lens	Wide Spread lens
White	2JA 980 629-001	2JA 980 629-501
Blue	2JA 980 629-111	

Power Consumption	12W (White)
Lux @ 1m	Spread: 1650 Lux Wide: 375 Lux
Beam Angle	Spread: 36° Wide: 100°
Dimensions (H,W,D)	100 x 177 x 25mm



DuraLED 50 Red/White

Light Colour	Spread lens
White/Red	2JA 980 604-061

Power Consumption	10W (White)
Dimensions (H,W,D)	100 x 177 x 30mm



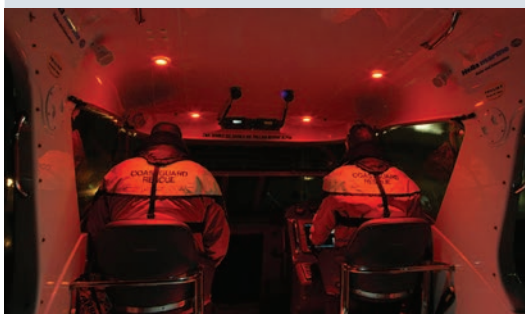
Accessory Lamps

LED lamps offer many advantages over traditional incandescent and bulb lighting including reduced power consumption, multiple colours and a longer life time of reliable operation.

Flexible LED Chart lamps.

Energy efficient lighting for a variety of interior applications including chart table and navigation area lighting, berth lighting and adjustable reading lights.

Available in single red or white LED light or dual colour red and white LED versions with integrated dimming via a rotary switch built into the head.



Hella marine Slim Line LED courtesy lamps.

Lens technology provides an even spread of soft light without glare or eye strain.

Each lamp is a completely sealed design, highly impact resistant and shock resistant, ensuring an ultra long service life. Perfectly suited for the demanding marine environment, these lamps can be installed on a vessel's interior or exterior, in wet or dry conditions.

Hella marine LED courtesy lamps run very cool due to their low current draw of less than 0.5W. This provides safer installation into light weight materials where the heat of incandescent lamps may cause damage to the surrounding structure.



LED

IP67
COMPLETELY
SEALED

CORROSION
RESISTANT

UV RESISTANT

MADE IN
NZ

5 YR
WARRANTY

Ponui Wall Lamp

Light Colour	12V	24V
White	2JA 958 358-001	2JA 958 358-201
Warm White	2JA 958 358-011	2JA 958 358-211

Power Consumption	3W
Lux @ 1m	100
Beam Angle	80°
Materials	Chrome Plated Brass

The Ponui Gen 2 provides comfortable colour temperatures in white and warm white with excellent colour rendering performance, consistent illumination and coordinated ambience throughout a vessel.



Slim Line Courtesy Lamps

Round with stainless steel trim

Light Colour	12V	24V
White	2XT 980 500-521	2XT 980 501-521
Warm White	2XT 980 500-721	2XT 980 501-721
Blue	2XT 980 502-221	2XT 980 503-221
Red	2XT 980 507-221	2XT 980 508-221

Square with chrome plated trim

Light Colour	12V	24V
White	2XT 980 580-571	2XT 980 581-571
Warm White	2XT 980 580-771	2XT 980 581-771
Blue	2XT 980 582-271	2XT 980 583-271
Red	2XT 980 587-271	2XT 980 588-271

Note: White trim options also available

Power consumption	0.5W
Protection	IP67
Dimensions Round	72 x 21mm (S/S Cap)
Dimensions Square	60 x 21mm



Flexi-spot Chart Lamp

Light Colour	150mm Shaft	400mm Shaft
White / Red	2JA 343 720-522	2JA 343 720-622
White	2JA 346 720-022	2JA 346 720-122
Red	2JA 346 720-052	2JA 343 720-152

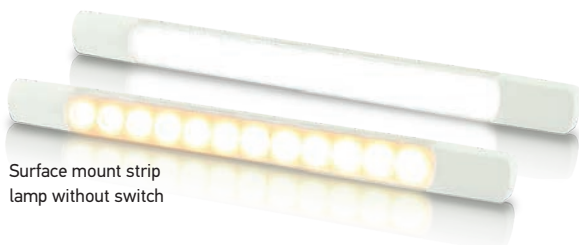
Power consumption	2W
Protection	IP52
Dimensions (H,W,D)	104 x 46 x 36mm (lamp head)



LED Strip Lamps

These surface mount LED strip lamps feature completely sealed housing with class leading efficiency. An unintrusive 11mm or 14mm profile makes these suitable for a wide range of illumination tasks. An optional bracket is also available to mount these lamps at a 45° angle, increasing your mounting options.

Lamp Type	Surface strip lamps with switch
Lens Material	Corrosion, UV and impact resistant acrylic
Colour Temperature	5000K (White) 2700K (Warm White)
Dimming	Hella marine dimmer 5XA 998 572-001
Cable	Pre-wired with 500mm of marine cable
Operating Voltage	12V DC or 24V DC
Power Consumption	3W - White
Lux @ 1m	256 (White)
Beam Angle	40°
Protection	IP67 (Completely sealed)
Dimensions	283mm x 25mm x 14mm (incl. switch)

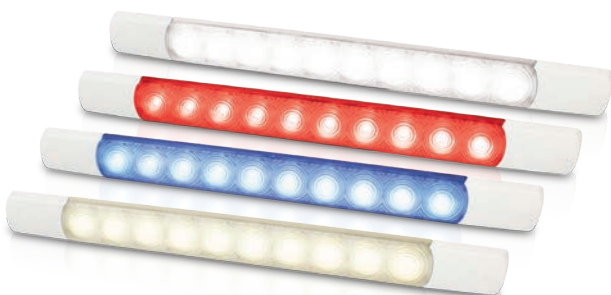


Surface mount strip lamp without switch



8HG 958 000-011

For mounting strip lamps at 45°. This bracket is available separately.



This courtesy strip lamp uses less than 1.5 watts, it is this soft light intensity which makes it a perfect option for ambient lighting.



Surface Mount with Switch



Light Colour	12V	24V
White	2JA 958 123-001	2JA 958 123-401
White / Red	2JA 958 121-001	2JA 958 121-401
White / Blue	2JA 958 121-011	2JA 958 121-411
Warm White	2JA 958 123-101	2JA 958 123-501
Warm White / Red	2JA 958 121-101	2JA 958 121-501
Warm White / Blue	2JA 958 121-111	2JA 958 121-511

Surface Mount - No Switch

Light Colour	12V	24V
White	2JA 958 124-001	2JA 958 124-401
Warm White	2JA 958 124-101	2JA 958 124-501



1.5W Courtesy Intensity

Light Colour	12V	24V
White	2JA 980 881-012	2JA 980 881-112
Warm White	2JA 980 881-212	2JA 980 881-312
Blue	2JA 980 881-402	2JA 980 881-502
Red	2JA 980 881-602	2JA 980 881-702

Lamp Type	Courtesy Surface Strip
Power Consumption	1.5W (White)
Beam Angle	42°
Dimensions (H,W,D)	25 x 283 x 11mm

Step Lighting

Stylish LED step lamps provide safe, reliable and energy efficient lighting to illuminate steps, potential hazards and general areas like walkways.

The completely sealed housings mean they are suitable for interior or exterior applications.

Available in White, Warm White, Red or Blue so you can create your own unique style on board.

- Completely sealed IP67
- UV, corrosion and impact resistant
- Ultra low power consumption
- Pre-wired with marine cable
- Made in New Zealand
- 5 year warranty



Light Colour	Chrome Plated Cap	White Plastic Cap	Stainless Steel Cap
White	2JA 958 126-001	2JA 958 126-011	2JA 958 126-031
Warm White	2JA 958 126-401	2JA 958 126-411	2JA 958 126-431
Blue	2JA 958 126-101	2JA 958 126-111	2JA 958 126-131
Red	2JA 958 126-201	2JA 958 126-211	2JA 958 126-231

Power consumption	0.5W
Protection	IP67
Dimensions (H,W,D)	32 x 45 x 23mm



Ideal for illuminating on board areas such as steps, stairs, toe kicks, storage areas, companion ways, deck fittings, signs and switches. Completely sealed and ultra durable, Hella marine LED lamps may be installed on a vessel's interior or exterior, wet or dry. Lamps are also shock and vibration resistant and represent reliable 'fit and forget' technology. Multivolt electronics ensure constant light output in 12V or 24V DC systems.

Step lamps feature engineered optics to direct light downwards at 30 degrees safely illuminating deck and step tread surfaces without shining into the eyes.

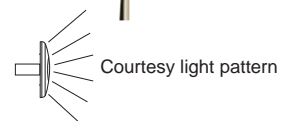


Surface Mount Oblong Courtesy



Light Colour	Stainless Steel Cap
White	2XT 980 869-301
Warm White	2XT 980 869-401
Blue	2XT 980 869-601
Red	2XT 980 869-501

Power consumption	0.5W
Protection	IP67
Dimensions (H,W,D)	29 x 84 x 9mm

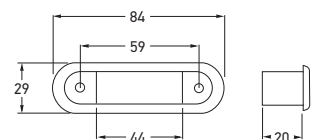


Oblong Step Lamp



Light Colour	Stainless Steel Cap
White	2XT 959 680-811
Warm White	2XT 959 680-411
Blue	2XT 959 680-611
Red	2XT 959 680-711

Power consumption	0.5W
Protection	IP67
Dimensions (H,W,D)	29 x 84 x 20mm



Turbo Fans, Plugs and Sockets



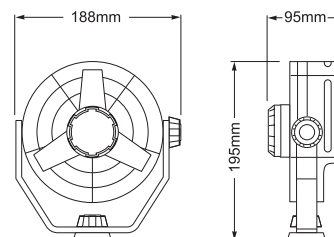
Turbo Fans

Hella Turbo fans may be turned and pivoted in all directions and locked into position.

- Quality German motor provides very quiet operation
- 150mm diameter fan blade with guard
- High air moving capacity with low power consumption
- Two speed switch in front of the blade guard
- Side, upright or pendant mounting

Voltage	Housing Colour	Part Number
12V	Black Housing	8EV 003 361-001
12V	White Housing	8EV 003 361-021
24V	Black Housing	8EV 003 361-012

Material Description	Impact resistant plastic
Switch	Integrated 2 stage rotary
Output	Speed 1: 70 litre/sec. Speed 2: 95 litre/sec.
Power Consumption	6.5W
Installation	Pre-wired with 140mm of cable



Water Resistant Plugs & Sockets

Description	Pin	Material	Part Number
Socket	2 Pin	Chrome Brass	8JB 950 987-002
Plug	2 Pin	Chrome Brass	8JB 950 988-002
Plug & Socket	2 Pin	Plastic	8JB 006 801-802

Plug Socket Type	Metal	Plastic
Material Description	Chrome brass housings. Brass contacts	Impact resistant plastic housing Silver contacts.
Maximum Load	22A at 12V	16A at 12V
Installation	Screw terminals	

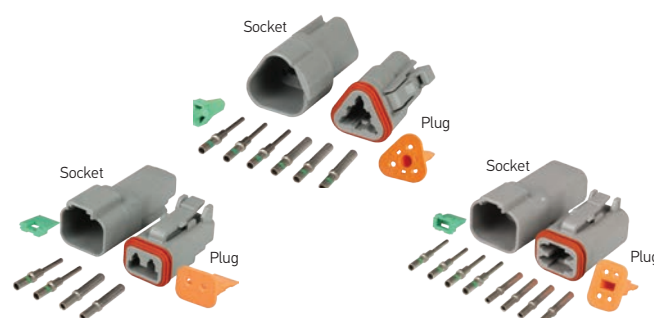
Description	Part Number	Pack Qty
2 Pole plug & socket	8KW 959 772-821	
2 Pole plug	8JA 959 772-811	Pack of 10
2 Pole socket	9MK 910 095-001	Pack of 10
2 Pole plug kit	8JA 959 736-811	
3 Pole plug & socket	8KW 959 772-851	
4 Pole plug & socket	8KW 959 772-861	



Metal Plug & Socket suitable for cable up to 6.5mm diameter.



8JB 006 801-802
Plastic Water Proof Plug suitable for cable up to 8.0mm diameter.



Switches and Dimmer

LED Illuminated Switches

Exterior durable, stainless steel switches featuring a ring of LED light.

Manufactured from 304 stainless steel, these through panel mount switches are IP67 rated when installed and ideal for switching lighting or installing into custom switch panels. The light rings may be wired to show power to a system or signal circuit activation.

Material Description	304 Stainless Steel
Contact Material	Silver Alloy
Terminal Type	5 Pin (2.8 x 0.5mm) switches
Panel Thickness	1~ 10mm
Insulation Resistance	≥ 1000MΩ
Contact Resistance	≤ 50mΩ
Operating Temp	-20°C~ +55°C
Max. Switch Rating	5A
Protection	IP67 (Completely sealed)
Buzzer sound intensity	>80dB (1m)



Stainless Steel Switches with LED Ring - Latching

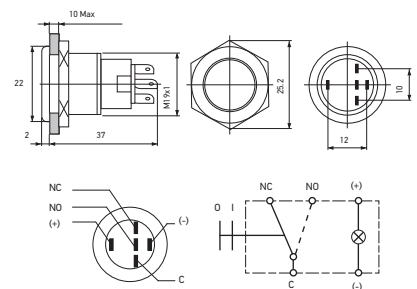
Light Colour	Voltage	Operation	Part Number
Red	12V DC	On / Off	8HG 958 455-001
Blue	12V DC	On / Off	8HG 958 455-011
Red	24V DC	On / Off	8HG 958 455-101
Blue	24V DC	On / Off	8HG 958 455-111

Stainless Steel Switches with LED Ring - Momentary

Light Colour	Voltage	Operation	Part Number
Red	12V DC	Momentary	8HG 958 455-201
Blue	12V DC	Momentary	8HG 958 455-211
Red	24V DC	Momentary	8HG 958 455-301
Blue	24V DC	Momentary	8HG 958 455-311



Quick connect plug with cable assembly



2 Group Light Dimmer

The Hella marine 2 Group Light Dimmer provides precise dimming control for one or two separate light groups, and sophisticated voltage regulation with a 'soft-start' feature to lengthen the life of filament bulbs.

Max. Load	200W at 12V and 400W at 24V
Max. Load Per group	100W at 12V and 200W at 24V
Input Voltage Range	8 - 30V DC
System Voltage	12V or 24V DC
Number of Groups	2
Switches Per Group	Unlimited
Switch Type	Momentary normally open
Weight	140 grams
Protection	Overload, Temperature, Low voltage
Fuse	2 x 10A
PWM Frequency	400Hz

2 Group Light Dimmer

Part Number

5XA 998 572-001



Diagram 1

Controlling both groups with one switch.

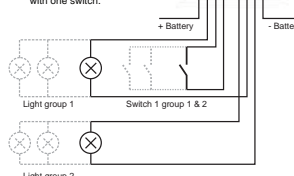


Diagram 2:

Controlling each group with its own (set of) switch(es)

